

OPERATING INSTRUCTION -12

CONTENTS

Warning	1
Thanks To The Buyer	1
About This Manual	1
Produce Lvstructural Brief Introduction	2
Technical Parameter	3
Technical Characteristic Describes	4
Safe Working Instruction	4
Preparatory Stage.....	5
Begin To Operate	7
Friction Clutch	7
Master Switch And Overload Protective Device	7
Gear Speed Adjustment	7
Common Fault And The Method Of Removing	8
Spare Parts List Exploded Drawing	9

Operation Manual

WARNING

To prevent electric shock or fire, please strictly abide by the procedures in the operation manual.

The machine only for the specialized persons, please do not let other people operate.

If any violation of the instructions operation and cause personal injury or machine damage, our company disclaim all responsibility.

The machine can only be maintained by the people who has the certification.

THANKS TO THE BUYER

Thanks for buying the series of diamond drill of . Please read operation manual and must pay attention to the safety precaution.

The right operation, will make you fully feel our products superior performance.

Please put this manual in a safe place for future reference.

ABOUT THIS MANUAL

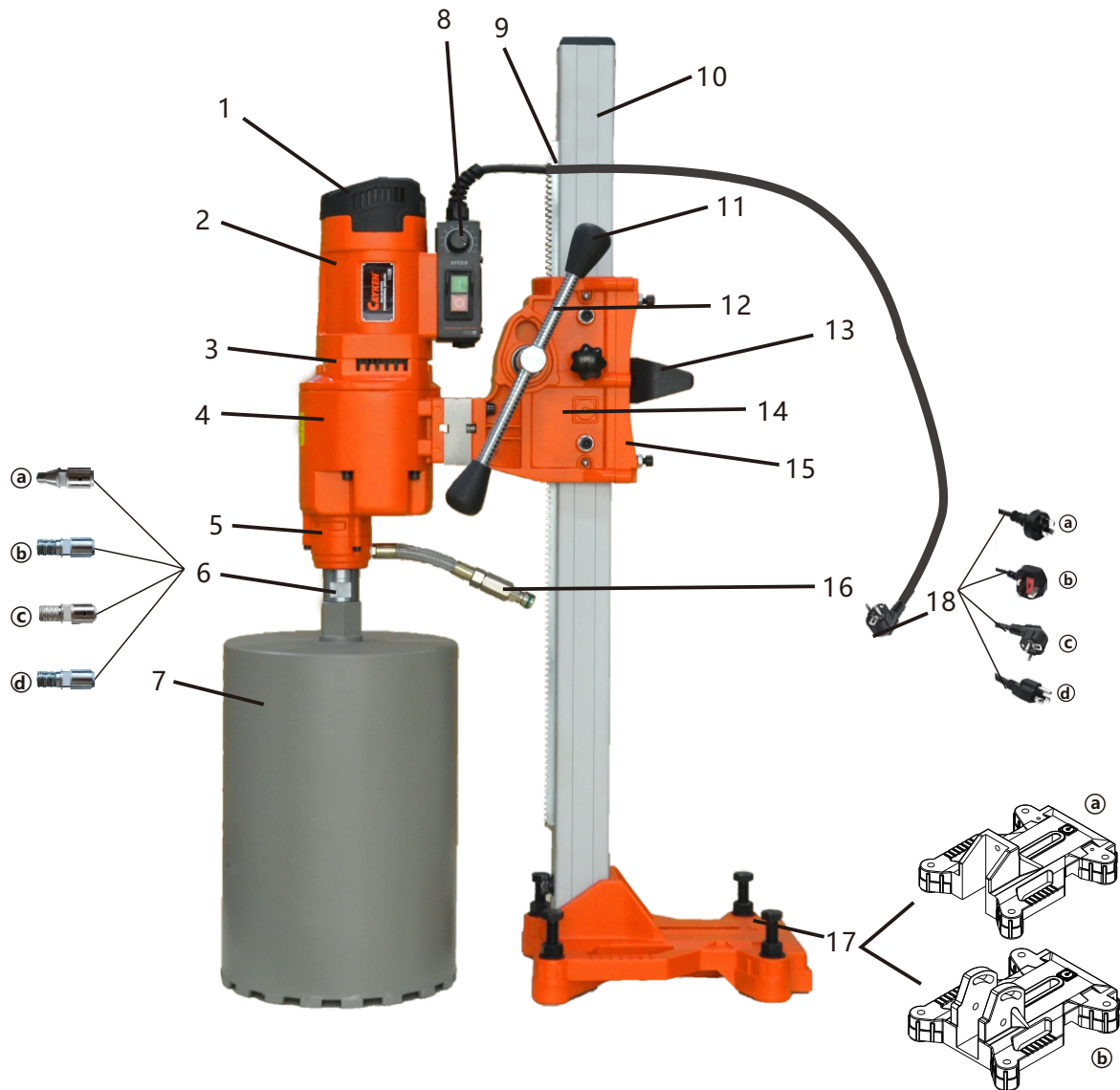
The machine model of the description in this manual:

913 913E 913B	925B 930B 935B 940B 945B 950B
916 916E 916B	925BE 930BE 935BE 940BE 945BE 950BE
918 918E 920 920E	925/2B 930/2B 935/2B 940/2B
923 923E 925 925E	945/2B 950/2B
930 930E 935 935E	925/2BE 930/2BE 935/2BE 940/2BE
940 940E 945 945E 950 950E	945/2BE 950/2BE
925/2 925/2E 930/2 930/2E 935/2 935/2E	930/3B 935/3B 940/3B 945/3B 950/3B
940/2 940/2E 945/2 945/2E 950/2 950/2E	930/3BE 935/3BE 940/3BE 945/3BE 950/3BE
930/3 930/3E 935/3 935/3E 940/3 940/3E	
945/3 945/3E 950/3 950/3E	

Confirm the machine model according to the nameplate.



PRODUCE LVSTRUCTURAL BRIEF INTRODUCTION



- | | |
|---|--|
| 1.Cover | 10.Column |
| 2.Stator shell | 11.Handle |
| 3.Cover | 12.Rocking bar |
| 4.Gearbox | 13.Fitting |
| 5.Water seal | 14.Lifter |
| 6.Spindle(a: Beijing thread; b, 1-1/4" -3UNC; C: 1-1/4" -7UNC, d: 1-1/4" -7UNC G/1/2) | 15.Lifting cover |
| 7.Core bit | 16.Hose tap |
| 8.Motor switch | 17.Base (a. normal stand b.angle adjustable bracket) |
| 9.Rack | 18.Plug (A.CN B.GB C.EP D.US) |

TECHNICAL PARAMETER

Machine model	Specified voltage (V)	Rated power (W)	Rated frequency (Hz)	Corresponding rotational speed (rpm)						Biggest drill hole (mm)
911/913B	110/200 ~	1980	50-60	100-2850						~ 4.5" (~ 110)
916/916B	110/200 ~	2300	50-60	100-1900						~ 6" (~ 152)
913/913E	110/200 ~	1980	50-60	1190					100-1190	~ 5" (~ 130)
916/916E	110/200 ~	2300	50-60	1070					100-1070	~ 6" (~ 160)
918/918E	110/200 ~	3800	50-60	630					100-630	~ 7" (~ 160)
920/920E	110/200 ~	4000	50-60	620					100-620	~ 8" (~ 205)
923/923E	110/200 ~	4180	50-60	600					100-600	~ 9" (~ 235)
925/925E	110/200 ~	4350	50-60	506					100-506	~ 10" (~ 250)
930/930E	110/200 ~	4650	50-60	406					100-406	~ 12" (~ 300)
935/935E	110/200 ~	4880	50-60	335					100-335	~ 14" (~ 350)
940/940E	110/200 ~	5180	50-60	313					100-313	~ 16" (~ 400)
945/945E	110/200 ~	5380	50-60	260					100-260	~ 18" (~ 450)
950/950E	110/200 ~	5580	50-60	260					100-260	~ 20" (~ 500)
925/2/925/2E	110/200 ~	4350	50-60	595/940					100-595/940	~ 10" (~ 250)
930/2/930/2E	110/200 ~	4650	50-60	410/640					100-410/640	~ 12" (~ 300)
935/2/935/2E	110/200 ~	4880	50-60	350/560					100-350/560	~ 14" (~ 350)
940/2/940/2E	110/200 ~	5180	50-60	320/500					100-320/500	~ 16" (~ 400)
945/2/945/2E	110/200 ~	5380	50-60	250/410					100-250/410	~ 18" (~ 450)
950/2/950/2E	110/200 ~	5580	50-60	250/410					100-250/410	~ 20" (~ 500)
930/3/930/3E	110/200 ~	4650	50-60	415	100-415	620	100-620	830	100-830	~ 12" (~ 300)
935/3/935/3E	110/200 ~	4880	50-60	350	100-350	530	100-530	710	100-710	~ 14" (~ 350)
940/3/940/3E	110/200 ~	5180	50-60	310	100-310	460	100-460	620	100-620	~ 16" (~ 400)
945/3/945/3E	110/200 ~	5380	50-60	260	100-260	390	100-390	530	100-530	~ 18" (~ 450)
950/3/950/3E	110/200 ~	5580	50-60	260	100-250	390	100-390	530	100-530	~ 20" (~ 500)
925B 925BE	110/200 ~	4350	50-60	506					100-506	~ 10" (~ 250)
930B 930BE	110/200 ~	4650	50-60	406					100-406	~ 12" (~ 300)
935B 935BE	110/200 ~	4880	50-60	335					100-335	~ 14" (~ 350)
940B 940BE	110/200 ~	5180	50-60	313					100-313	~ 16" (~ 400)
945B 945BE	110/200 ~	5280	50-60	260					100-260	~ 18" (~ 450)
950B 950BE	110/200 ~	5580	50-60	260					100-260	~ 20" (~ 500)
925/2B 925/2BE	110/200 ~	4350	50-60	595/940					100-595/940	~ 10" (~ 250)
930/2B 930/2BE	110/200 ~	4650	50-60	410/640					100-410/640	~ 12" (~ 300)
935/2B 935/2BE	110/200 ~	4880	50-60	350/560					100-350/560	~ 14" (~ 350)
940/2B 940/2BE	110/200 ~	5180	50-60	320/500					100-320/500	~ 16" (~ 400)
945/2B 945/2BE	110/200 ~	5280	50-60	250/410					100-250/410	~ 18" (~ 450)
950/2B 950/2BE	110/200 ~	5580	50-60	250/410					100-250/410	~ 20" (~ 500)
930/3B 930/3BE	110/200 ~	4650	50-60	415	100-415	620	100-620	830	100-830	~ 12" (~ 300)
935/3B 935/3BE	110/200 ~	4880	50-60	350	100-350	530	100-530	710	100-710	~ 14" (~ 350)
940/3B 940/3BE	110/200 ~	5180	50-60	310	100-310	460	100-460	620	100-620	~ 16" (~ 400)
945/3B 945/3BE	110/200 ~	5380	50-60	260	100-260	390	100-390	530	100-530	~ 18" (~ 450)
950/3B 950/3BE	110/200 ~	5580	50-60	260	100-250	390	100-390	530	100-530	~ 20" (~ 500)

To improve product constantly, our reservation does not need the right of informing in advance for technical data change.

TECHNICAL CHARACTERISTIC DESCRIBES

Above series drilling machine can only install on frame to use. This machine applies to the professional personage operating use that has gotten professional training , carries out drill hole on the materials such as rock, reinforced concrete and pitch material or take core. The diameter of drill hole exceeds 250 mm, must use high performance expansion bolt to fix. In getting into the process of cutting , cooling water flows through ball valve to go through bit , rushes to go to broken bits , is going to at the same time cool for the knife head of bit(the wet condition that gets into edge. Diamond bit, it is the pipe form drilling tool of a kind of hollow, when its front the section piece that welding(or sintering) go up and contain diamond If be necessary, cooling water may collect through a kind of special installation (water collect).

SAFE WORKING INSTRUCTION

Pay attention: When use electric tool, to avoid that electric shock is dangerous or occur fire, please follow safe working instruction surely. Please read earnestly before manipulator ware , and keep this rules in safe place.

- 1.Work maintains the working environment with neat place and confused internal organs to be easy more to arouse accident.
- 2.Begin work is former, as working environment carries out necessary cleaning, can't use electric tool in rain, cannot when being near to burn angry local use electric tool.
- 3.To avoid electric shock, please do not directly contact earthing parts with hand as metal pipeline, heating pipeline, stove or coal-scuttle .
- 4.Cannot make child be near Please do not let have not received contact line cable or the people manipulator ware of professional training, please let be unconcerned people to be far away from working place.
- 5.Guarantee that tool is stocking and safe. The electric tool that not used should be kept in the place that is dried and is far away from child.
- 6.Do not make your electric tool overloaded , can develop the fine performance of machine fully more in specified load scope.
- 7.Dress correct protection clothes Cannot wear very comfortable clothing or wear jewelry, otherwise be twined very much by the revolving part of machine occur danger. Manipulator ware , suggest to put on ear shield and rubber gloves , wear to guard against slippery shoes in enter the plate of long hair safety helmet.
- 8.If inconvenience. May install machine connection to aspiration.
- 9.Cannot use line cable to do other use cannot use line cable to drag Ye machine, cannot Ye line cable pulls out plug.
- 10.Cannot over bend waist , avoid that body adopts unusual attitude. Ensure you to stand position safety maintains body balance.
- 11.Please protect your machine properly, in order to make it develop function normally when it is working. Please follow working instruction when changing tool. Often inspect machine from tape line cable , ensure to have no breakage, maintaining handle to be dried have no oil.

-
12. Machine does not use for a long time, before defending machine or before changing bit, please pull out the plug of power source.
 13. Cannot stay in the spanner of handling bit bit is above, before starting machine, ensure that spanner has left bit.
 14. Avoid accident start machine. When moving to put through the machine of power source, cannot put finger on switch. Ensure that before plug is being inserted into socket, machine switch is in the location that stops.
 15. In outdoor manipulator ware, please use the cable of extension line that accords with safe requirement.
 16. In unit process of cargo bandling must notice concentration, do not when excessiveness tiredness, after wine, finish drill with the condition of taking medicine to make tool.
 17. The type of generator speed adjustment or gear speed adjustment in work please select the adaptive bit of appearance, and open speed most quickly, so machine reach best state. If rig in working process rock, must close machine to inspect the concentric degree of bit and main shaft, can damage machine otherwise to occur danger.
 18. Pay attention: For your personal benefit, please choose original factory accessory. Is not original factory accessory if choosing, will may produce injury for operator or the very machine.

PREPARATORY STAGE

Follow the steps to installing and connecting. You can use additional tool. To complete the following work.

Pay attention: Before joining, must guarantee that the switch of main computer is in the state that stops.

Step 1: Comparing with the inspection of container load plan, machine and parts open package, inspect machine in transportation process, whether damage, inspection the voltage of building site whether the voltage that shows on nameplate is consistent, contrast container load plan sees the attachment in package whether is complete.

Step 2: Power source joins, according to a standard EN61029 and a IEC1029-2 6 of European Union, taking the diamond drilling machine of water schoolwork must add to pack the protector of leakage of electricity, the socket of power source must carry out earthing. It is consistent with these safe rules, our product matches have packed the protector of leakage of electricity, its function, including leakage of electricity are protected untie with under-voltage to deduct. Insert the plug of power source well after, the switch face plate of the protector of leakage of electricity must ensure that is in ON (beginning) location. Fall if arising voltage drop, the protector of leakage of electricity will automatic everything breaks, once after voltage normal, should operate the protector of leakage of electricity again in REST cubes (reset) location. The protector of leakage of electricity specified movement current is 30mA.

Pay attention: Quote clean source of water surely, contain grit waiting for until the water of impurity may damage the water set sealing ring of machine, 3 biggest hydraulic pressure is 3BAR.

Step 3: Source of water joins , the random were additional water inlet of flexible tube holds to have " fast joint" may join to wire reinforced suction hose very conveniently on water supply system.

Pay attention: If the protector function of leakage of electricity is not normal , please do not want manipulator ware.

Step 4: Safety is tested , pressing generator switch and machine (soft start switch) start smoothly. Press the protector button of leakage of electricity of " test " , machine stops operation , then resumes the power supply for machine again according to the button of " reset " .

Pay attention: Must cannot soak the protector of leakage of electricity in water. Must often pass according to press TEST button, come to inspect its function whether is normal. Suggesting operator not to operate do not take the diamond drilling machine of the protector of leakage of electricity.

BEGIN TO OPERATE

1、Choose suitable diamond bit

The silk of main shaft of our company deducts 4 kinds uses type frequently, please choose the reliable diamond bit of quality. Choose sharp tool , ! And ensure that segment is first to have enough backlash(the thickness of segment the thickness that is larger than tube wall , such do good to more in row bits) between metal tube wall. It is above that using waterproof oil paint in the silk of bit to deduct, in order to make dismantling bit convenient. Ensure bit way jump do not be larger than 1 mm(eccentricity).

2、Fix frame in face

Regular method has expansion bolts to fix ; vacuum sucker is fixed ; supports regular etc..

The most general method is fixed for expansion bolt, please use the diameter of metal expansion bolt and bolt as far as possible, must be larger than 12 mm. Using vacuum sucker fix , ensure that vacuum pump has enough efficiency, sealing ring complete have no breakage. Adopting support ensure when fixing way that frame has enough stability.

Fix using expansion screw regular way, first, will guarantee that face and the base of machine will be balanced , if have , it is high! Please use the spanner that takes in machine attachment for low injustice, the 4 adjustment screws on regulation base are balanced till base. After being fixed completely, machine should guarantee that generator will not slide on rack. And will make efforts around around pull to move pillar , will guarantee that when pillar is not around , sway side may use machine.

Pay attention: Our company suggests to use expansion bolt regular way to fix vigorously, and the location of expansion screw lets egg to pillar direction to be near is best. Since fixing consequence our company that not causes firmly , do not undertake any duty.

Vertical upward drill hole, must ensure special turn water to obtain basin , guard against generator strictly cannot enter water. In working error any suspension, open only to start machine road can. Ensure to take the charge of machine fear start former bit may turn freely. Is not blocked in hole.

FRICTION CLUTCH

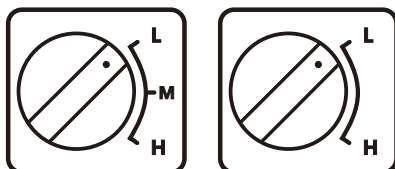
Clutch carries out protection under high-strength mechanical overload condition for operator, machine and bit. Please ensure clutch in a separation state goes off work to do not exceed 3-4 second, because it will cause temperature rise quickly and causes wear for friction flat that time passes length.

MASTER SWITCH AND OVERLOAD PROTECTIVE DEVICE

After pressing switch, machine (soft start switch) starts smoothly. If machine is overload, its electron protects switch, will remind operator machine to be overload with exceptional fluctuation. If load does not be reduced , after some seconds of clocks, switch is closed voluntarily. Start again if remove load, machine will again start smoothly. When start machine again is former, ensure bit may turn freely is not blocked in drill hole. It will even burn out for that generator causes serious infringement if this machine highest compression is higher than 260 V for 260 V. When using generator to supply power , must notice that voltage peak value cannot be higher than 260 V.

GEAR SPEED ADJUSTMENT

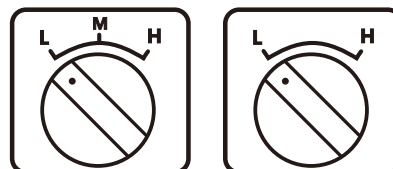
Ordinary gear speed adjustment



3 files

2 files

Oil soaks money gear speed adjustment



3 files

2 files

To improve the efficiency of drilling, some machines have 3 type gear speed changes. In it is high to divide , high speed files (the day files) apply to little bit and more soft material to rush , fast files (M files) apply to in bit and more hard material; The files of low speed (L files) apply to big bit and hard material.

- ▲ Machine turns under stoping the state that turns or stops soon to move group change files.
- ▲ Machine must want to shift gear to position when shifting gear , if occur main shaft after start, it does not turn or have tooth sound to explain that files position does not hang to position , must close switch at once, and turn again move knob to the position that needs files at the same time round trip turns main shaft (hang files easily), have obvious put into gear to block until position.
- ▲ Must close mains switch at once, round trip turns mainshaft to at the same time turn to move knob. Machine is operating at full speed, load or card please don't change files when living.

L is the files of low speed, H is high speed files, M is the files of middling speed (3 files types), graphic representation is the files of low speed, spin along hour hand if by the files of low speed, turning high speed files knob, otherwise counter-clockwise.

COMMON FAULT AND THE METHOD OF REMOVING

Fault	Reason	The method of removing
Generator does not turn	Power source is obstructed , or contacts to loosen to fall	Resume power source , inspect all joints and tighten
	Carbon brush blocks , take off open commutator	New installation carbon brush
	After the protector movement of leakage of electricity, do not reset	Press reset button to start generator again
	The protector damage of leakage of electricity	Change the protector of leakage of electricity
Drill hole is too slow	Bit life has arrived	Change bit
	Feed pressure is too low	Increase feed pressure
	Bit knife first surface is pasted by thin bits	Clean bit, increase hydraulic pressure
	Rotational speed is too high	Switch the files position of low speed
	It is slippery to cut thick reinforcing bar to hit	Feed pressure reduces is little after,will cross reinforcing bar increase pressure again
	In processing hole, amass bits	Put in order hole bottom. Pressurization
	Current does not be obeied , leakage or have no reflux	Inspect into the valve of water polo , inspect current
	Bit sharp degree reduces	Using fire-resistant brick or emery wheel open edge again
Bit blocks	The leather or broken bits piece of reinforcing bar blocks , is geting into core between bit or between bit and hole wall, frame fixes , is not firm , it is exceptional to produce displacement frame pillar and the gap of sliding sleeve.	Stop machine , turn bit around spanner, or pull out bit to knock broken get into heart to fix the frame adjustment gap of sliding sleeve again.
Bit wall wear is rapid	Main shaft not just	Repair or change main shaft
	Bit not just	Change bit
	Reinforcing bar or thin bits can not remove hole outside	Improvement current, take out bit , clean hole
Water set leakage	The skeleton wear or ageing of sealing ring	Change skeleton sealing ring

MAINTENANCE AND REPAIR

ATTENTION: You must remove the main plug from the supply socket before beginning any maintenance or repair work.

- ◆ Clean the machine with a dry or moist cleaning-rag and not with a jet of water. Make sure that no water gets into the motor or the switch box. Ensure that the ventilation slots are always clean. Clean and grease the tool thread, too.

- ◆ Oil bath gear

The gear oil should be changed after 300 hours of operation. Ensure that this work is carried out in a specialist workshop, or proceed as follows: Clamp the machine vertically in the vice. Remove the three hexagon socket screws. Take off motor and intermediate cover. Change gear oil—use only original oil. The filling quantity is 300-310ml. To reassemble, proceed vice versa and ensure that the shim ring is on the front shaft.

ATTENTION: if gear oil escapes, stop the machine immediately. Leakage of oil damages the gear. Water connection

If water escapes from the overflow hole on the water connection ring, the rotary shaft seals must be replaced immediately. This should only be done in an authorized specialist workshop.

Carbon brushes

The carbon brushes should be examined for wear after about 300 hours in operation, and replaced if necessary. As with all other work on the motor, this should only be carried out by an electrician.

WARRANTY

We warrant all products manufactured or sold by it against defects in workmanship or materials for a period of 12 months from the date of shipment to the customer. Please contact our factory or the authorized repair shop in your local area for replacement or repair of defective parts.

This warranty does not cover normal wear and tear, overloading, non-compliance with the operating instruction and intervention by unauthorized persons or the use of parts from other companies.

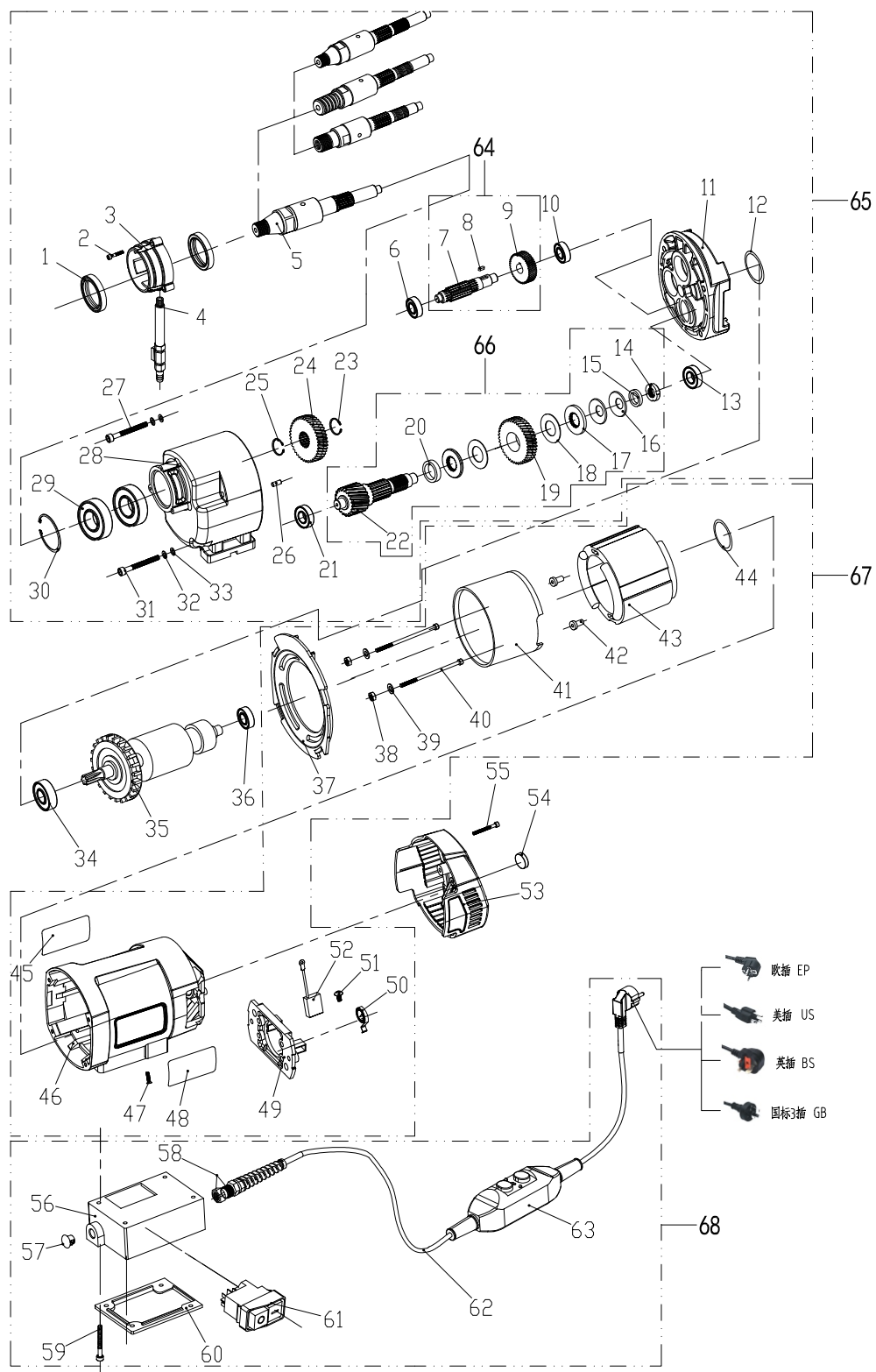
✖ We don't warrant the situation that machine is not fixed by users and damaged.



NO.	Parts name	QTY
1	Water seal 40 * 50 * 7	2
2	Hegonal screw M5 * 18	3
3	Water circle 200C	1
4	Hose faucet 200A-EU	1
5	Spindle KF-200	1
6	Bearing 6201	1
7	Class I tooth axis 180-2	1
8	Marketing 4 * 10	1
9	Class I gear 200C-1(8)	1
10	Bearing 6201	1
11	Middle cover 200C-1	1
12	O-ring φ 34.5 * 2.65	1
13	Bearing 6201	1
14	Nut 200	1
15	Iron Ring 200-2	1
16	Curved bullet pad 200A	2
17	Flesh iron 200A	2
18	Separation film 200A	2
19	Class II gear 180-3	1
20	Ring 250	1
21	Bearing 6201	1
22	Class II tooth axis 180-4	1
23	Card 22	1
24	Spindle gear 250-5	1
25	Card 24	1
26	Cylinder pin 4 * 12	1
27	Hegonal screw M6 * 85(half tooth)	2
28	Gear box 200C-1	1
29	Bearing 6005	2
30	Inner card 47	1
31	Hegonal screw M6 * 110(half tooth)	2
32	Pad M6	4
33	Pad M6	4
34	Bearing 6202	1
35	Rotor OND-920	1
36	Bearing 6201	1
37	Breeze 200C	1
38	Loose nut M5	2
39	Pad M5	2
40	Hegonal screw M5 * 105(half tooth)	2
41	Interior 200C	1
42	Insulation sleeve 200A	2
43	Stator OND-920	1
44	O-ring φ 38 * 3.1	2
45	Business Sign 200C	1
46	Stator hull 200C	1
47	Cross level screw M4 * 8	1
48	Parameter card OND(58.5 * 36.5)	1
49	Brush frame 200C	1
50	Bypass 200A	2
51	Round Head Cross Screw M4 * 8(Copper)	2
52	Carbon Brush 200A	2
53	Cover 200C	1

NO.	Parts name	QTY
54	Horizontal 15 * 8	1
55	Hegonal screw M4 * 10	2
56	Switch Box 200A-FS	1
57	Button head SKT-10	1
58	Fold proof connector M16 * 1.5	1
59	Hegonal screw M4 * 45(half tooth)	4
60	Switch Box Cover 200A-FS	1
61	Electromagnetic switch KJD17	1
62	Power cord 3 * 1.0 * 3.5 M	1
63	Leakage protector PD16	1

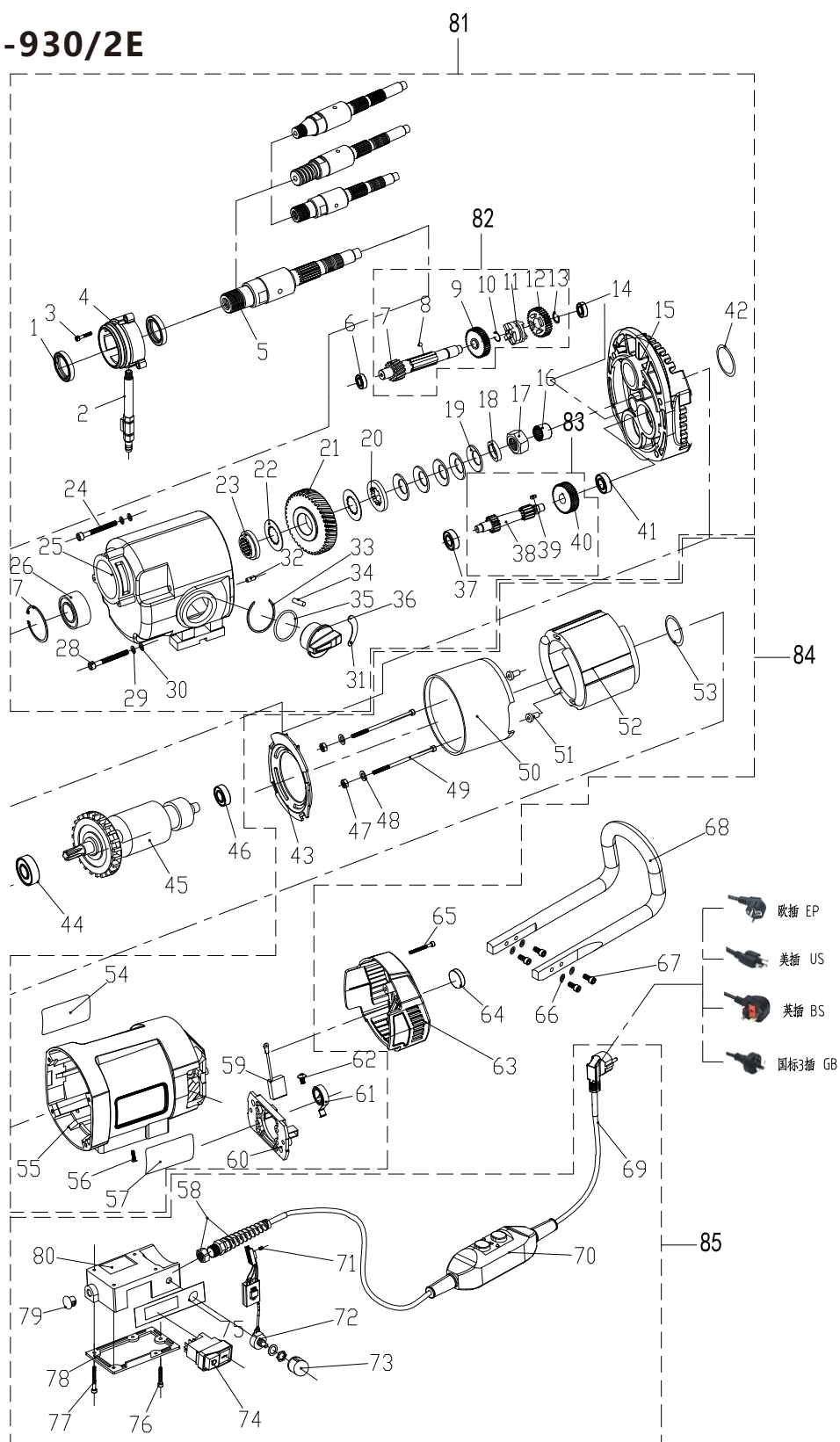
OND-920



NO.	Parts name	QTY
1	Water seal 40 * 50 * 7	2
2	Hose faucet 200A-EU	1
3	Hegonal screw M5 * 18	3
4	Watershed 250C	1
5	Main axis 230 tune	1
6	Bearing 6202	1
7	Class II gear axis 250A/2 -6(14)	1
8	Ball head plunger M8 * 15	1
9	Type II High Speed Gear 250A/2 -5	1
10	Stop Ring 18	1
11	Class II sliding gear 250A/2 -4	1
12	Type II low-speed gear 250A/2 -3	1
13	Card 16	1
14	Bearing 6201	1
15	Middle cover 250C	1
16	Roller bearings BAM1212	1
17	Nut 200A	1
18	Ring 250	1
19	Curved bullet pad 200A	5
20	Flesh iron 200A	2
21	Spindle gear 250A-5(14)	1
22	Separation film 200A	2
23	Hand-key pad 250A	1
24	Hegonal screw M6 * 125(half tooth)	2
25	Gear box 250C	1
26	Bearing 3205	1
27	Inner card 52	1
28	Hegonal screw M6 * 135(half tooth)	2
29	Pad M6	4
30	Pad M6	4
31	File plate 250A/2	1
32	Cylinder pin 4 * 12	1
33	Stop ring φ 40	1
34	Cylinder pin 5 * 28	1
35	O-ring φ 42 * 3.1	1
36	Dialing knob 250C	1
37	Bearing 6201	1
38	Class I tooth axis 250A/2 -2	1
39	Marketing 4 * 10	1
40	Class I gear 250C-1(8)	1
41	Bearing 6201	1
42	O-ring φ 34.5 * 2.65	1
43	Breeze 200C	1
44	Bearing 6202	1
45	Rotor OND-930 / 2E	1
46	Bearing 6201	1
47	Loose nut M5	2
48	Pad M5	2
49	Hegonal screw M5 * 105(half tooth)	2
50	Stator inner liner 200C	1
51	Insulation sleeve 200A	2
52	Stator OND-930 / 2E	1
53	O-ring φ 38 * 3.1	1

NO.	Parts name	QTY
54	Business Sign 200C	1
55	Stator hull 200C	1
56	Cross level screw M4 * 8 white	1
57	Parameter card OND(58.5 * 36.5)	1
58	Fold proof connector M16 * 1.5	1
59	Carbon Brush 200A	2
60	Brush frame 200C	1
61	Bypass 200A	2
62	Round Head Cross Screw M4 * 8(Copper)	2
63	Cover 200C	1
64	Horizontal instrument φ 15 * 8	1
65	Hegonal screw M4 * 10	2
66	Pad M5	4
67	Hegonal screw M5 * 10	4
68	Curved handle 200D	1
69	Power cord 3 * 1.5 * 3.5 M	1
70	Leakage protector PD16	1
71	Round Cross Screw M4 * 10	1
72	Governor SCY20504050(A)	1
73	Speed control knob KN-8D	1
74	Electromagnetic switch KJD17	1
75	Speed adjustment label SCY	1
76	Hegonal screw M4 * 25	1
77	Hegonal screw M4 * 50(half tooth)	4
78	Switching box cover 200A-T-FS	1
79	Button head SKT-10	1
80	Switch Box 200A-T-FS	1

OND-930/2E



NO.	Parts name	QTY
1	Water seal 40 * 50 * 7	2
2	Hose faucet 200A-EU	1
3	Hegonal screw M5 * 18	3
4	Watershed 250C	1
5	Main axis 230 tune	1
6	Bearing 6202	1
7	Class II tooth axis 250A/3 -6(12)	1
8	Ball head plunger M8 * 15	1
9	Type II High Speed Gear 250A/3 -5	1
10	Stop Ring 18	1
11	Class II sliding gear 250A/3 -4	1
12	Type II low-speed gear 250A/3 -3	1
13	Card 16	1
14	Bearing 6201	1
15	Middle cover 250C	1
16	Roller bearings BAM1212	1
17	Nut 200A	1
18	Ring 250	1
19	Curved bullet pad 200A	5
20	Flesh iron 200A	2
21	Host gear 250A-5(12)	1
22	Separation film 200A	2
23	Hand-key pad 250A	1
24	Hegonal screw M6 * 125(half tooth)	2
25	Gear box 250C	1
26	Bearing 3205	1
27	Inner card 52	1
28	Hegonal screw M6 * 135(half tooth)	2
29	Pad M6	4
30	Pad M6	4
31	File plate 300A/3	1
32	Cylinder pin 4 * 12	1
33	Stop ring φ 40	1
34	Cylinder pin 5 * 28	1
35	O-ring φ 42 * 3.1	1
36	Dialing knob 250C	1
37	Bearing 6201	1
38	Class I tooth axis 250A/3 -2	1
39	Marketing 4 * 10	1
40	Class I gear 250C-1(8)	1
41	Bearing 6201	1
42	O-ring φ 34.5 * 2.65	1
43	Breeze 200C	1
44	Bearing 6202	1
45	Rotor OND-935 / 3E	1
46	Bearing 6201	1
47	Loose nut M5	2
48	Pad M5	2
49	Hegonal screw M5 * 105(half tooth)	2
50	Interior 200C	1
51	Insulation sleeve 200A	2
52	Stator OND-935 / 3E	1
53	O-ring φ 38 * 3.1	1

NO.	Parts name	QTY
54	Business Sign 200C	1
55	Stator hull 200C	1
56	Cross level screw M4 * 8 white	1
57	Parameter card OND(58.5 * 36.5)	1
58	Fold proof connector M16 * 1.5	1
59	Carbon Brush 200A	2
60	Brush frame 200C	1
61	Bypass 200A	2
62	Round Head Cross Screw M4 * 8(Copper)	2
63	Cover 200C	1
64	Horizontal instrument φ 15 * 8	1
65	Hegonal screw M4 * 10	2
66	Pad M5	4
67	Hegonal screw M5 * 10	4
68	Curved handle 200D	1
69	Power cord 3 * 1.5 * 3.5 M	1
70	Leakage protector PD16	1
71	Round Cross Screw M4 * 10	1
72	Governor SCY20504050(A)	1
73	Speed control knob KN-8D	1
74	Electromagnetic switch KJD17	1
75	Speed adjustment label SCY	1
76	Hegonal screw M4 * 25	1
77	Hegonal screw M4 * 50(half tooth)	4
78	Switching box cover 200A-T-FS	1
79	Button head SKT-10	1
80	Switch Box 200A-T-FS	1

OND-935/3E

